

FIRE HUNTER® USA

Art. No. 502004 men, 502005 women



NFPA 1971-2018, NFPA 1990 (1992)-2022; CSA Z195-2014; ASTM F2413-2018

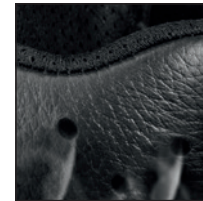
HAIX® Secura Liner, HAIX® Sun Reflect Leather, HAIX® Climate System, HAIX® MSL System, leg height: 14 inches, sole 011

Available sizes: Men 5 – 16 & half sizes, Women 5 – 12 & half sizes

Available widths: Narrow, Medium, Wide



502004/05



HAIX® Climate System



Rubber Toe Cap



HAIX® Secura Liner®

Footwear inner liner which will never pull out or wrinkle up over time; lining is firmly secured and sealed along with the upper leather beneath the sole.

HAIX® Sun Reflect Leather

Reduces the heating effect of the upper leather. Sunlight is reflected by the leather, keeping the leather and the feet cooler.

HAIX® Climate System

Permits air circulation with every step – warm air is released and fresh air comes in through the vent holes at the top of the boot.

HAIX® MSL System

Micro Soft Light: PU foam injected throughout the sole for greater shock absorption and cold/heat insulation; extremely low weight.

Upper Material

Waterproof leather, hydrophobic and breathable.

HAIX® Protective Toe Cap

Anatomically formed and well-padded protective toe cap to meet ASTM 2413-2018 and CSA Z195-2014 standard for personal protection – protective footwear.

HAIX® Protective Flexible Midsole

Flexible protective stainless steel, cast into the sole, to meet ASTM F2413-2018 and CSA Z195-2014 standard for personal protection – protective footwear

Moisture Barrier

CROSSTECH® footwear: waterproof and breathable, bacteria, chemical and bloodborne pathogen resistant. Highly abrasion resistant and softly padded with breathable foam.

Sole

Nitrile rubber shell sole, fuel-oil resistant, self-cleaning tread. Electrical hazard resistant to 14 kV acc. to NFPA 1971-2018.

Insole

Anatomically formed, quick change, machine washable insert with excellent moisture absorption and quick drying qualities.

Footbed

Anatomically formed TEXON (fleece) absorbs moisture and supports ankle.

Other

Profiled rubber toe cap, large boot straps on both sides.

Extended Wear Program

Out of warranty footwear can be refurbished with original factory parts through an extended wear package. This package includes any necessary replacement or repair of stitching, profiled rubber toe caps, insoles, and retreading of soles. Footwear will be cleaned and deodorized. HAIX footwear owners also have the option of a sole retread only or a toe cap replacement only.

UK	3	3½	4	4½	5	5½	6	6½	7	7½	8	8½	9	9½	10	10½	11	11½	12	12½	13	13½	14	14½	15
EU	35	36	37	37	38	39	39	40	41	41	42	43	43	44	45	45	46	47	47	48	48	49	50	50	51
US	4	4½	5	5½	6	6½	7	7½	8	8½	9	9½	10	10½	11	11½	12	12½	13	13½	14	14½	15	15½	16

HAIX® North America Inc.

2320 Fortune Drive, Suite 120, Lexington, KY 40509
 Phone 859-281-0111, Fax 859-281-0113
 Toll free 866-344-HAIX (4249), www.haix.com